


 **Primary 5 Science (Term 2) - Henry Park** 

Add Questions

Assign

Settings

Review

 Duplicate Print Delete Assign Test**Test Introduction**[+ Add Introduction](#)**58 Questions** (67 Points)Question Bank: 9,275 Questions 

Test Questions

0 Test Assignments

Question 1

Primary 5 Science » Primary 5 Science (Term 2)

2 pts

For each question, four options are given. One of them is the correct answer. Make your choice (A, B, C or D) and choose the correct answer below. (56 marks)

Minghao was drinking a cup of hot coffee when his spectacles fogged up.

Which of the following statements explains why his spectacles had fogged up?

- A) Water from the surrounding air condenses on the cool surface of his lens.
- B) Water from the surrounding air evaporates from the cool surface of his lens.
- C) Water vapour from the hot coffee evaporates from the cool surface of his lens.
- D) Water vapour from the hot coffee condenses on the cool surface of his lens.

Question Type: Multiple Choice
Randomize Answers: No
Date Added: Thu 5th Aug 2021
Last Modified: N/A
QID#: 28,627,502

[Answers](#) | [Edit](#) | [Duplicate](#) | [Used In](#) | [Reorder](#)
[Remove From Test](#)**Question 2**

Primary 5 Science » Primary 5 Science (Term 2)

2 pts

The wheels of a horse cart are fitted with steel rims.



The original size of the steel rim is smaller than the original size of the wooden spoke.



The list of steps below shows how the steel rim is fitted around the wooden spoke:

- Step 1: Heat up the steel rim with burning coals.
- Step 2: Place the heated steel rim around the wooden spoke.
- Step 3: Quickly pour cold water onto the fitted rim.

Which of the following statements explains why step 3 needs to be carried out?

- A) The steel rim will expand so that it can grip the wooden spoke tightly.
- B) The wooden spoke will expand so that it will not fall out of the steel rim.
- C) The wooden spoke will contract so that it will not fall out of the steel rim.
- ✓ D) The steel rim will contract to its original size and grip the wooden spoke tightly.

Question Type: Multiple Choice
 Randomize Answers: No
 Date Added: Thu 5th Aug 2021
 Last Modified: N/A
 QID#: 28,627,498

[↶ Answers](#) | [✎ Edit](#) | [📄 Duplicate](#) | [📌 Used In](#) | [⚙ Reorder](#)

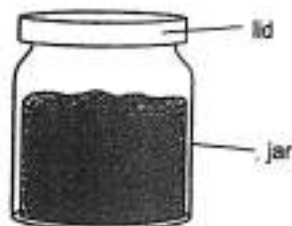
[Remove From Test](#)

Question 3

Primary 5 Science » Primary 5 Science (Term 2)

2 pts

Richard could not open a jar of jam because the lid was too tight.



Which of the following shows the correct action that would help Richard open the jar of jam and explanation on how it helped?

A)	Action	Explanation
	Heat the lid over a flame.	The heat will cause the lid to contract and loosen.

- ✓ B)
- | Action | Explanation |
|-----------------------------------------|---------------------------------------------------|
| Wrap the lid with a piece of warm cloth | The heat will cause the lid to expand and loosen. |
- C)
- | Action | Explanation |
|-----------------------------|-----------------------------------------------------|
| Heat the bottom of the jar. | The heat will cause the jar to contract and loosen. |
- D)
- | Action | Explanation |
|--------------------------------------------|--------------------------------------------------------------------|
| Immerse both the jar and lid in hot water. | The heat will cause both the jar and the lid to expand and loosen. |

Question Type: Multiple Choice
Randomize Answers: No
Date Added: Thu 5th Aug 2021
Last Modified: N/A
QID#: 28,627,499

[Answers](#) | [Edit](#) | [Duplicate](#) | [Used In](#) | [Reorder](#)

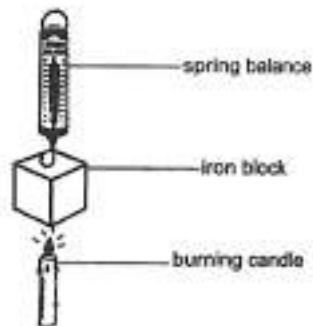
[Remove From Test](#)

Question 4

Primary 5 Science » Primary 5 Science (Term 2)

2 pts

An iron block was hung from a spring balance as shown below.



Which of the following correctly describes the volume and mass of iron block after being hung for 15 minutes above the burning candle?

- A)
- | Volume of iron block (cm ³) | Mass of iron block (g) |
|-----------------------------------------|------------------------|
| remained the same | increase |
- B)
- | Volume of iron block (cm ³) | Mass of iron block (g) |
|-----------------------------------------|------------------------|
| remained the same | remain the same |
- C)
- | Volume of iron block (cm ³) | Mass of iron block (g) |
|-----------------------------------------|------------------------|
| increased | increase |
- ✓ D)
- | Volume of iron block (cm ³) | Mass of iron block (g) |
|-----------------------------------------|------------------------|
| increased | remain the same |

Question Type: Multiple Choice
 Randomize Answers: No
 Date Added: Thu 5th Aug 2021
 Last Modified: N/A
 QID#: 28,627,500

[Answers](#) | [Edit](#) | [Duplicate](#) | [Used In](#) | [Reorder](#)

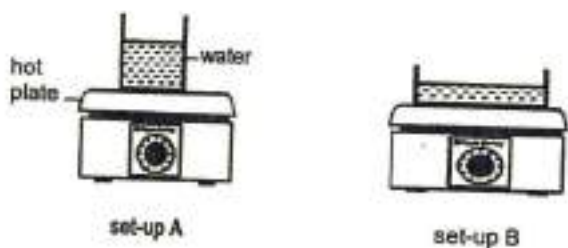
[Remove From Test](#)

Question 5

Primary 5 Science » Primary 5 Science (Term 2)

2 pts

Two containers of water, at room temperature, were heated on hot plates as shown in set-up A and set-up B. The identical hot plates were set to the same temperature. Each container had 500 cm³ of water.



Which of the following statement(s) is/are correct?

- A Water in set-up A will boil first.
- B The water in both containers will change state.
- C Water in set-up B will boil first.

- A) A only
- B) B only
- C) A and B only
- ✓ D) B and C only

Question Type: Multiple Choice
 Randomize Answers: No
 Date Added: Thu 5th Aug 2021
 Last Modified: N/A
 QID#: 28,627,501

[Answers](#) | [Edit](#) | [Duplicate](#) | [Used In](#) | [Reorder](#)

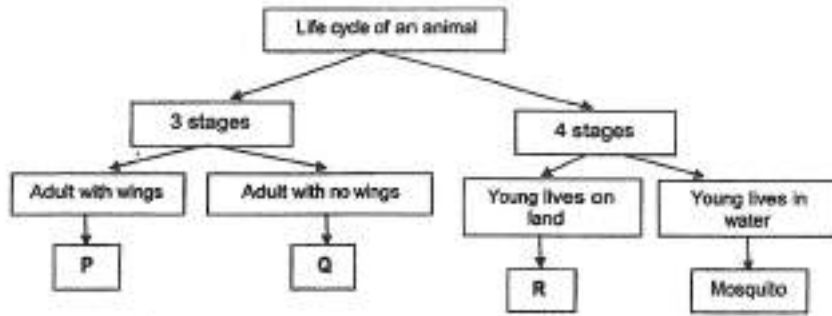
[Remove From Test](#)

Question 6

Primary 5 Science » Primary 5 Science (Term 2)

2 pts

Study the classification chart below.



Which one of the following animals represents P, Q and R?

- ✓ A)

P	Q	R
cockroach	frog	butterfly
- B)

P	Q	R
frog	cockroach	butterfly
- C)

P	Q	R
cockroach	butterfly	frog
- D)

P	Q	R
butterfly	frog	cockroach

Question Type: Multiple Choice
Randomize Answers: No
Date Added: Thu 5th Aug 2021
Last Modified: N/A
QID#: 28,627,503

[Answers](#) | [Edit](#) | [Duplicate](#) | [Used In](#) | [Reorder](#)

[Remove From Test](#)

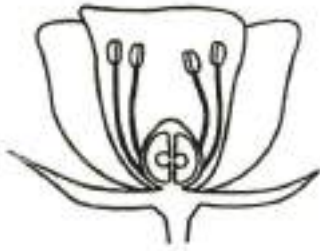
Question 7

Primary 5 Science » Primary 5 Science (Term 2)

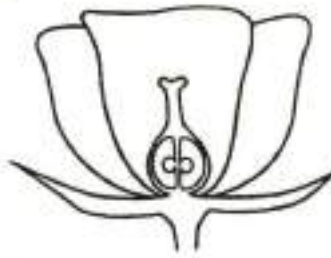
2 pts

The diagrams below show flowers that have not been pollinated.

(A)



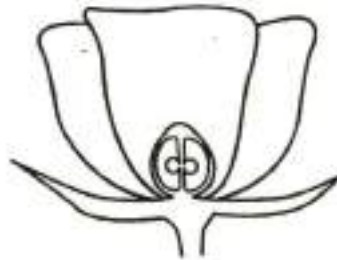
(B)



(C)



(D)



In which of the following flowers can pollination take place?

- A) A and C only
- ✓ B) B and C only
- C) A and D only
- D) B, C and D only

Question Type: Multiple Choice
Randomize Answers: No
Date Added: Thu 5th Aug 2021
Last Modified: N/A
QID#: 28,627,504

[Answers](#) | [Edit](#) | [Duplicate](#) | [Used In](#) | [Reorder](#)

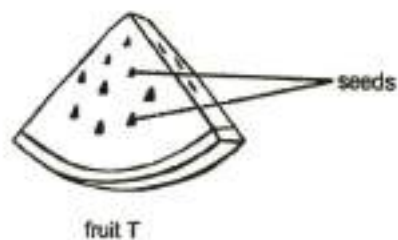
[Remove From Test](#)

Question 8

Primary 5 Science » Primary 5 Science (Term 2)

2 pts

The diagram below shows a slice of fruit T.



Based on the information given, which one of the following statements is most likely correct about the flower from which fruit T has developed?

- A) The flower has many ovaries.
- B) The flower has more than one stigma.
- C) There are many ovules inside its ovary.



D) The fruit is developed from a flower with many small petals.

Question Type: Multiple Choice
Randomize Answers: No
Date Added: Thu 5th Aug 2021
Last Modified: N/A
QID#: 28,627,505

[Answers](#) | [Edit](#) | [Duplicate](#) | [Used In](#) | [Reorder](#)

[Remove From Test](#)

Question 9

Primary 5 Science » Primary 5 Science (Term 2)

2 pts

Wenhao went for a run at the track. After the run, he perspired and felt even colder when it became windy.



Which of the following statements explains correctly why he felt colder when it became windy?

- A) His perspiration loses heat to the body and evaporates faster.
- B) His perspiration gains heat from the body and evaporates faster.
- C) His perspiration loses heat to the surrounding wind and evaporates faster.
- D) His perspiration gains heat from the surrounding wind and evaporates faster.

Question Type: Multiple Choice
Randomize Answers: No
Date Added: Thu 5th Aug 2021
Last Modified: N/A
QID#: 28,627,506

[Answers](#) | [Edit](#) | [Duplicate](#) | [Used In](#) | [Reorder](#)

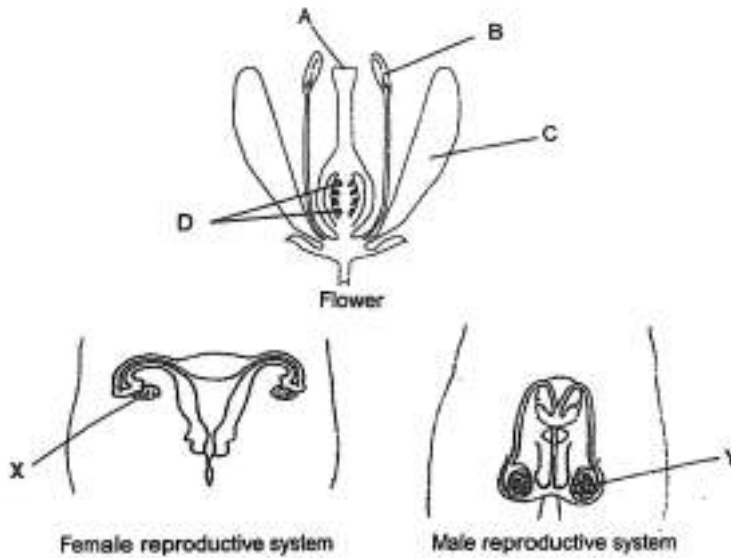
[Remove From Test](#)

Question 10

Primary 5 Science » Primary 5 Science (Term 2)

2 pts

The diagrams below show a flower, female human reproductive system and male human reproductive system.



Which part of the above flower has the same functions of X and Y in humans?

- A)

X	Y
C	B
- ✓ B)

X	Y
D	B
- C)

X	Y
A	D
- D)

X	Y
C	A

Question Type: Multiple Choice
Randomize Answers: No
Date Added: Thu 5th Aug 2021
Last Modified: N/A
QID#: 28,627,507

[Answers](#) | [Edit](#) | [Duplicate](#) | [Used In](#) | [Reorder](#)

[Remove From Test](#)

Question 11

Primary 5 Science » Primary 5 Science (Term 2)

2 pts

Flowers benefit directly from the visits of insects like butterflies and bees because they _____.

- A) fertilise the flowers.
- ✓ B) pollinate the flowers.
- C) lay eggs on the flowers.
- D) provide food for the flowers.

Question Type: Multiple Choice
 Randomize Answers: No
 Date Added: Thu 5th Aug 2021
 Last Modified: N/A
 QID#: 28,627,508

[Answers](#) | [Edit](#) | [Duplicate](#) | [Used In](#) | [Reorder](#)

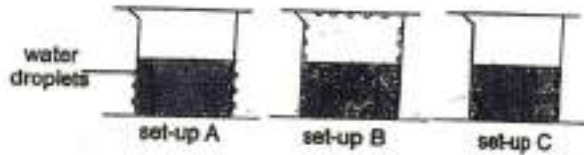
[Remove From Test](#)

Question 12

Primary 5 Science » Primary 5 Science (Term 2)

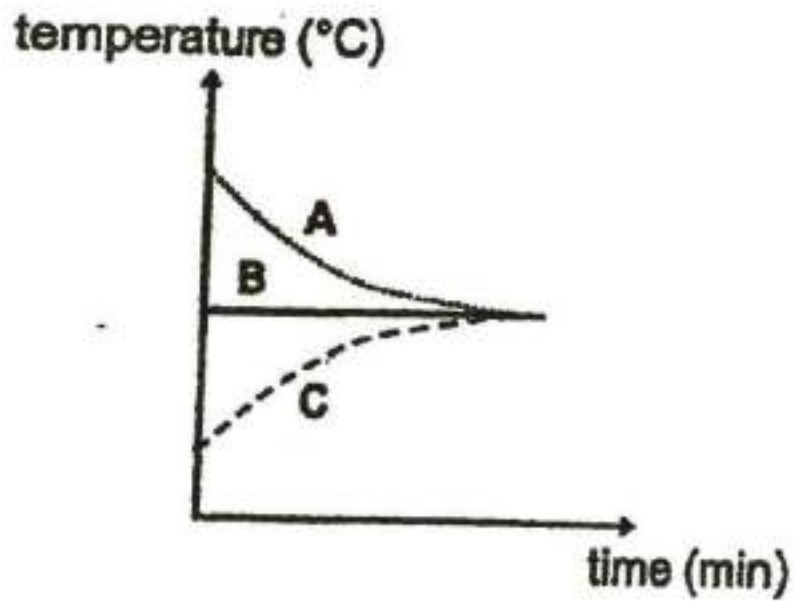
2 pts

Nelly conducted an experiment using the set-ups below. The set-ups are placed in the science lab at room temperature.

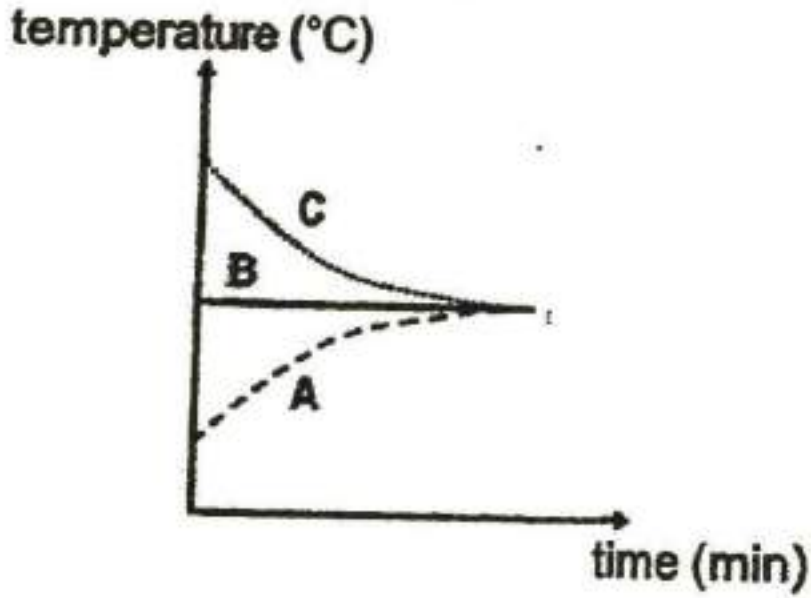


Which of the following graphs correctly shows the change in temperature of water in the three set-ups over time?

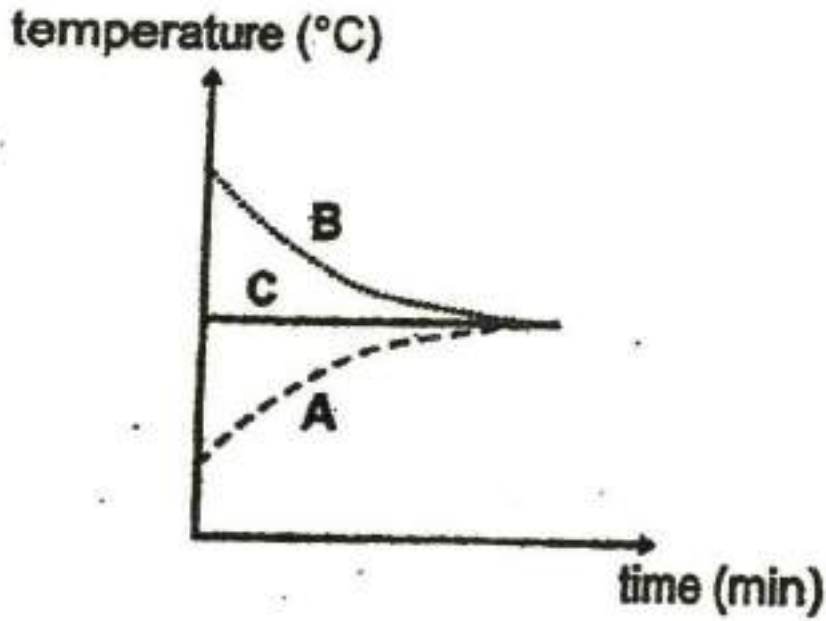
A)



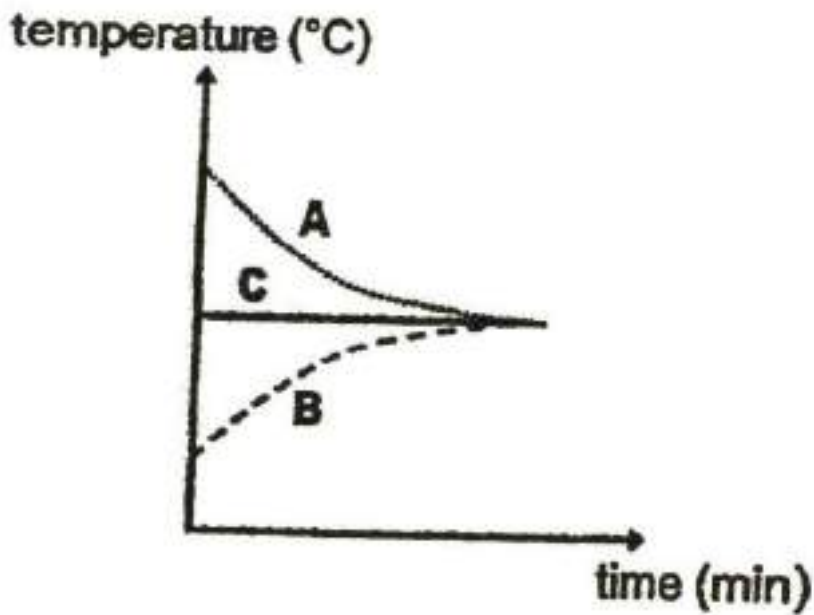
B)



✓ C)



D)



Question Type: Multiple Choice
Randomize Answers: No
Date Added: Thu 5th Aug 2021
Last Modified: N/A
QID#: 28,627,509

[Answers](#) | [Edit](#) | [Duplicate](#) | [Used In](#) | [Reorder](#)

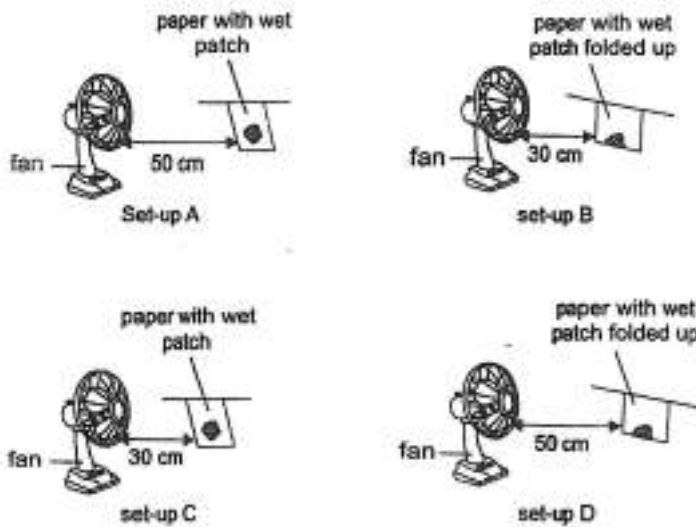
[Remove From Test](#)

Question 13

Primary 5 Science » Primary 5 Science (Term 2)

2 pts

Samy wanted to find out how the amount of wind affects the rate of evaporation of water on the paper. The fans are all moving at the same speed.



Which two set-ups should he use to have a fair experiment?

- A) A and B
- B) B and C
- ✓ C) A and C
- D) C and D

Question Type: Multiple Choice
Randomize Answers: No
Date Added: Thu 5th Aug 2021
Last Modified: N/A
QID#: 28,627,510

[Answers](#) | [Edit](#) | [Duplicate](#) | [Used In](#) | [Reorder](#)

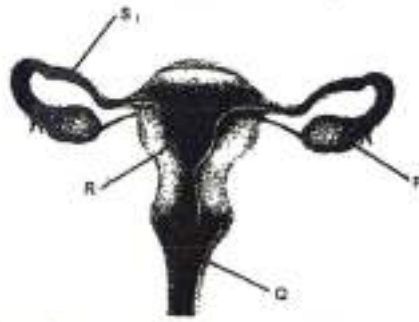
[Remove From Test](#)

Question 14

Primary 5 Science » Primary 5 Science (Term 2)

2 pts

The diagram below shows the female reproductive parts in humans.



Which part produces eggs and which part does a fertilised egg develop into an unborn baby in?

- A)

Produce eggs	Fertilised egg develops into an unborn baby
P	Q

- B)

Produce eggs	Fertilised egg develops into an unborn baby
S	R

- ✓ C)

Produce eggs	Fertilised egg develops into an unborn baby
P	R

- D)

Produce eggs	Fertilised egg develops into an unborn baby
S	Q

Question Type: Multiple Choice
Randomize Answers: No
Date Added: Thu 5th Aug 2021
Last Modified: N/A
QID#: 28,627,511

[↗ Answers](#) | [✎ Edit](#) | [📄 Duplicate](#) | [📌 Used In](#) | [⬇ Reorder](#)

[Remove From Test](#)

Question 15

Primary 5 Science » Primary 5 Science (Term 2)

2 pts

Which one of the following helps a developing baby get his nutrients from his mother?

- A) egg
- B) womb
- C) ovary
- ✓ D) umbilical cord

Question Type: Multiple Choice
Randomize Answers: No
Date Added: Thu 5th Aug 2021
Last Modified: N/A
QID#: 28,627,512

[↗ Answers](#) | [✎ Edit](#) | [📄 Duplicate](#) | [📌 Used In](#) | [⬇ Reorder](#)

[Remove From Test](#)

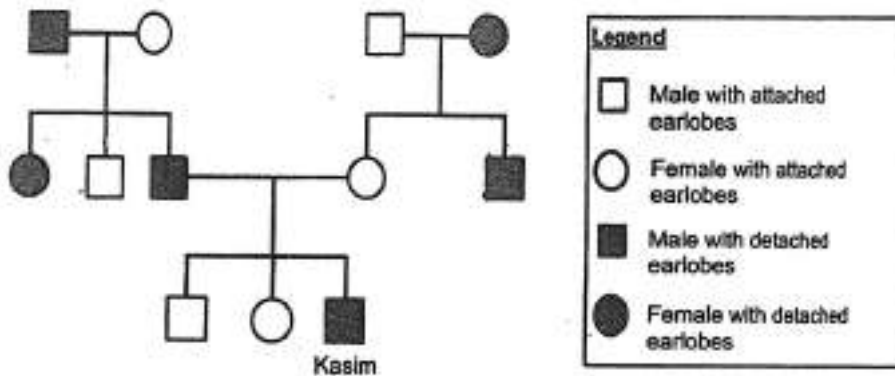
Question 16

Primary 5 Science » Primary 5 Science (Term 2)

2 pts

Study the family tree of Kasim as shown below.

The family tree shows the members who have attached earlobes or detached earlobes.



Which one of the following statements about the family tree is correct?

- A) Both Kasim's uncles have detached earlobes.
- ✓ B) Both Kasim's siblings have attached earlobes.
- C) Both Kasim's parents have detached earlobes.
- D) Both Kasim's grandmothers have attached earlobes.

Question Type: Multiple Choice
 Randomize Answers: No
 Date Added: Thu 5th Aug 2021
 Last Modified: N/A
 QID#: 28,627,513

[Answers](#) | [Edit](#) | [Duplicate](#) | [Used In](#) | [Reorder](#)

[Remove From Test](#)

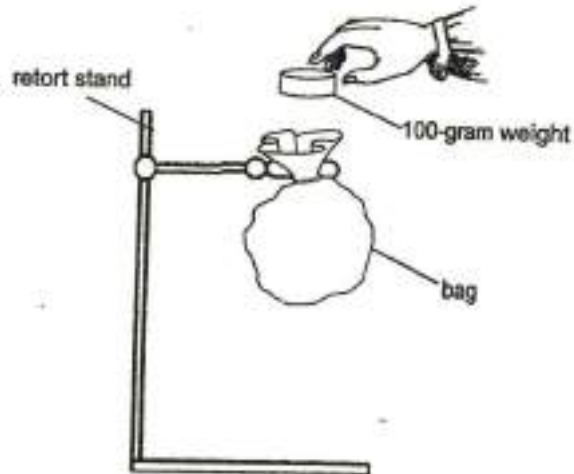
Question 17

Primary 5 Science » Primary 5 Science (Term 2)

2 pts

Ai Ling wanted to test the strength of bags made of four different materials.

She placed 100-gram weights, one at a time, into each bag until it tore.



She recorded the number of weights the bags could hold before they tore in the table below.

Material of bag	A	B	C	D
Number of 100-gram weights the bag could hold before it tore	8	4	2	6

Based on the information given, which of the following materials is the strongest?

- ✓ A) A
- B) B
- C) C
- D) D

Question Type: Multiple Choice
Randomize Answers: No
Date Added: Thu 5th Aug 2021
Last Modified: N/A
QID#: 28,627,514

[Answers](#) | [Edit](#) | [Duplicate](#) | [Used In](#) | [Reorder](#)

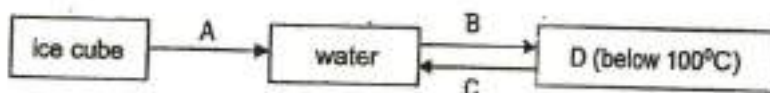
[Remove From Test](#)

Question 18

Primary 5 Science » Primary 5 Science (Term 2)

2 pts

The diagram below shows the changes of state in water.



Which of the following is correct?

A)

Process A	Process B	Process C	Substance D
Lose heat	Gain heat	Lose heat	Steam

B)

Process A	Process B	Process C	Substance D
Gain heat	Lose heat	Gain heat	Water Vapour

C)

Process A	Process B	Process C	Substance D
Lose heat	Gain heat	Gain heat	Steam

✓ D)

Process A	Process B	Process C	Substance D
Gain heat	Gain heat	Lose heat	Water Vapour

Question Type: Multiple Choice
Randomize Answers: No
Date Added: Thu 5th Aug 2021
Last Modified: N/A
QID#: 28,627,515

[Answers](#) | [Edit](#) | [Duplicate](#) | [Used In](#) | [Reorder](#)

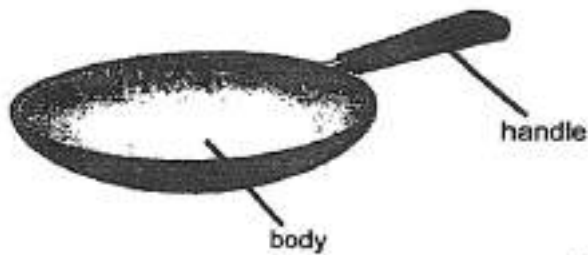
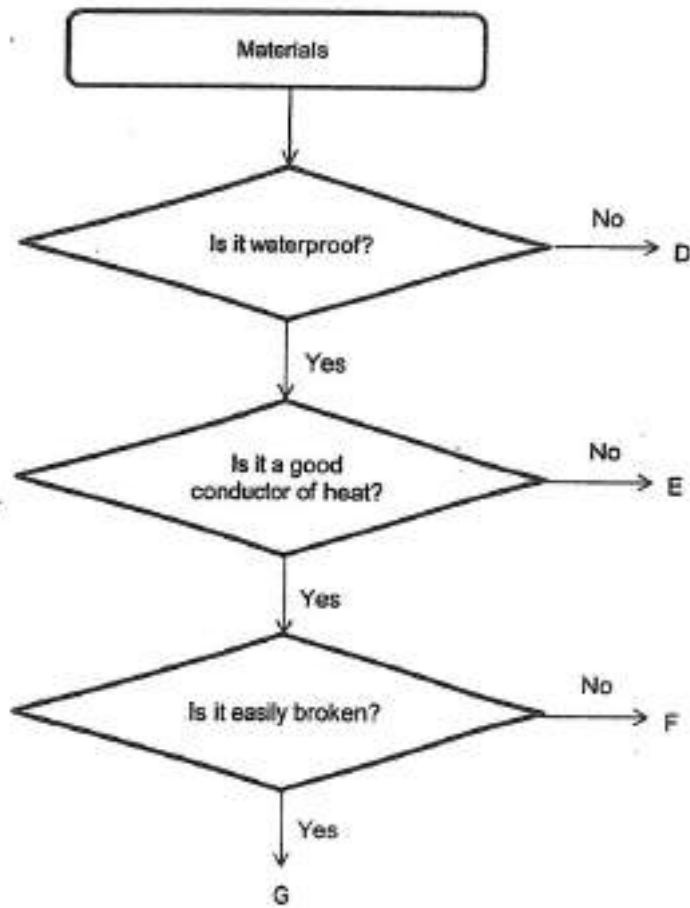
[Remove From Test](#)

Question 19

Primary 5 Science » Primary 5 Science (Term 2)

2 pts

Study the flowchart below.



Which material should Dinesh use to make the body and handle of the frying pan?

- A)

Body	Handle
D	E
- B)

Body	Handle
E	F
- ✓ C)

Body	Handle
F	E
- D)

Body	Handle
F	G

Question Type: Multiple Choice

Randomize Answers: No
Date Added: Thu 5th Aug 2021
Last Modified: N/A
QID#: 28,627,516

[Answers](#) | [Edit](#) | [Duplicate](#) | [Used In](#) | [Reorder](#)

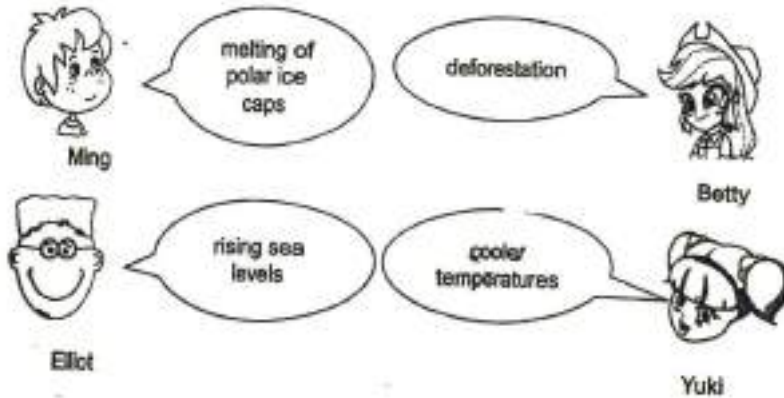
[Remove From Test](#)

Question 20

Primary 5 Science » Primary 5 Science (Term 2)

2 pts

Four students discussed on the effects of global warming as shown in the diagram below.



Which of the following students are correct?

- ✓ A) Ming and Elliot
- B) Elliot and Yuki
- C) Ming and Betty
- D) Yuki and Betty

Question Type: Multiple Choice
Randomize Answers: No
Date Added: Thu 5th Aug 2021
Last Modified: N/A
QID#: 28,627,517

[Answers](#) | [Edit](#) | [Duplicate](#) | [Used In](#) | [Reorder](#)

[Remove From Test](#)

Question 21

Primary 5 Science » Primary 5 Science (Term 2)

2 pts

In diagram 1, Aaron placed a cube near pole X of a U-shaped magnet and it was attracted to the pole. In diagram 2, without turning the cube, he placed it near pole Y. The cube was also attracted to that pole.



diagram 1



diagram 2

What conclusion can be drawn from the observation?

- A) The cube is a magnet.
- ✓ B) The cube is made of steel.
- C) The cube is made of copper.
- D) The magnet has two like poles.

Question Type: Multiple Choice
Randomize Answers: No
Date Added: Thu 5th Aug 2021
Last Modified: N/A
QID#: 28,627,518

[Answers](#) | [Edit](#) | [Duplicate](#) | [Used In](#) | [Reorder](#)

[Remove From Test](#)

Question 22

Primary 5 Science » Primary 5 Science (Term 2)

2 pts

In Singapore, waste may be sorted into different bins for the purpose of recycling.

Which of the following statements are correct reasons for recycling waste?

- A. To preserve trees
- B. To reduce pollution
- C. To reduce wastage of materials

- A) A and C only
- B) A and B only
- C) B and C only
- ✓ D) A, B and C only

Question Type: Multiple Choice
Randomize Answers: No
Date Added: Thu 5th Aug 2021
Last Modified: N/A
QID#: 28,627,519

[Answers](#) | [Edit](#) | [Duplicate](#) | [Used In](#) | [Reorder](#)[Remove From Test](#)**Question 23**

Primary 5 Science » Primary 5 Science (Term 2)

2 pts

Mrs. Ho placed a magnet on a tray of iron fillings.

Which one of the following diagrams correctly shows the pattern of the iron fillings attracted to the magnet?

A)



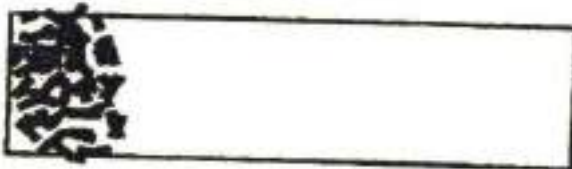
B)



✓ C)



D)



Question Type: Multiple Choice
Randomize Answers: No
Date Added: Thu 5th Aug 2021
Last Modified: N/A
QID#: 28,627,520

[Answers](#) | [Edit](#) | [Duplicate](#) | [Used In](#) | [Reorder](#)[Remove From Test](#)**Question 24**

Primary 5 Science » Primary 5 Science (Term 2)

2 pts

Jack used a float to help him swim in the pool.



Jack found that he can continue to pump air into the float even when it was fully inflated.

What physical property of air allowed him to do this?

- A) Air has mass
- B) Air occupies space
- ✓ C) Air can be compressed
- D) Air does not have a definite shape

Question Type: Multiple Choice
 Randomize Answers: No
 Date Added: Thu 5th Aug 2021
 Last Modified: N/A
 QID#: 28,627,521

[Answers](#) |
 [Edit](#) |
 [Duplicate](#) |
 [Used In](#) |
 [Reorder](#)

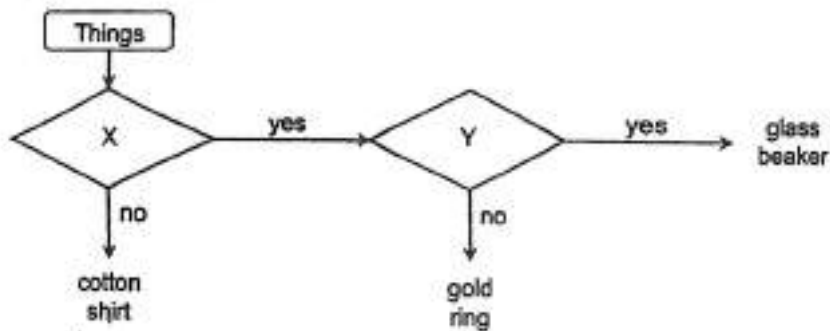
[Remove From Test](#)

Question 25

Primary 5 Science » Primary 5 Science (Term 2)

2 pts

Study the flow chart below.



Which of the following represents the missing questions, X and Y, in the flow chart?

A)

X	Y
Does it absorb water?	Is it flexible?

B)

X	Y
Does it allow most light to pass through?	Is it strong?

C)

X	Y

Does it absorb water? | Does it allow most light to pass through?

✓ D)

X	Y
Is it waterproof?	Does it allow most light to pass through?

Question Type: Multiple Choice
Randomize Answers: No
Date Added: Thu 5th Aug 2021
Last Modified: N/A
QID#: 28,627,522

[Answers](#) |
 [Edit](#) |
 [Duplicate](#) |
 [Used In](#) |
 [Reorder](#)

[Remove From Test](#)

Question 26

Primary 5 Science » Primary 5 Science (Term 2)

2 pts

Iman has a bowl of hot soup and he needs to cool the soup fast. Which of the following will help to cool the bowl of soup most quickly?

- A) Wrap the bowl with a dry cloth.
- B) Place the bowl in a ziplock bag.
- ✓ C) Pour the hot soup into a metal plate.
- D) Cover the top of the bowl with a wooden lid.

Question Type: Multiple Choice
Randomize Answers: No
Date Added: Thu 5th Aug 2021
Last Modified: N/A
QID#: 28,627,523

[Answers](#) |
 [Edit](#) |
 [Duplicate](#) |
 [Used In](#) |
 [Reorder](#)

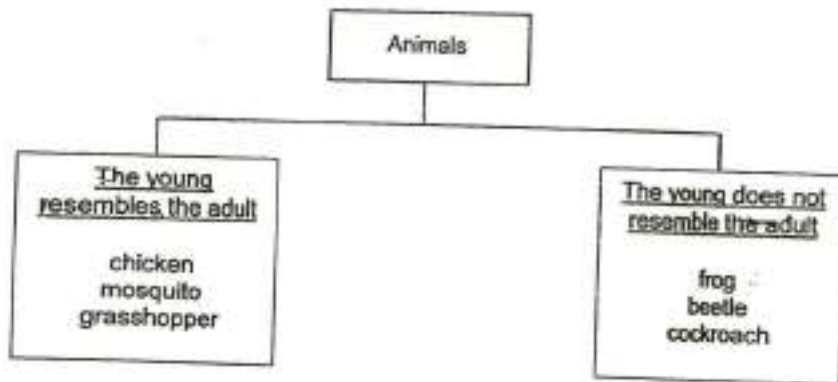
[Remove From Test](#)

Question 27

Primary 5 Science » Primary 5 Science (Term 2)

2 pts

Study the classification table below carefully.



Which animals have been placed incorrectly in the classification table?

- A) chicken and frog

- B) mosquito and beetle
- C) grasshopper and beetle
- ✓ D) mosquito and cockroach

Question Type: Multiple Choice
 Randomize Answers: No
 Date Added: Thu 5th Aug 2021
 Last Modified: N/A
 QID#: 28,627,524

[Answers](#) |
 [Edit](#) |
 [Duplicate](#) |
 [Used In](#) |
 [Reorder](#)

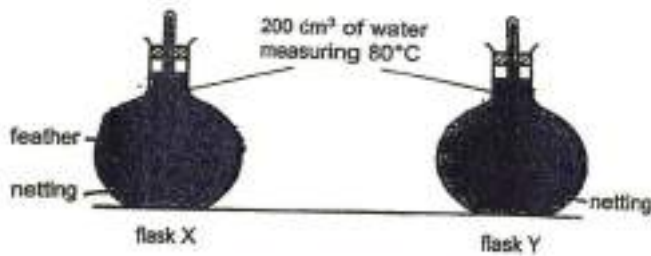
[Remove From Test](#)

Question 28

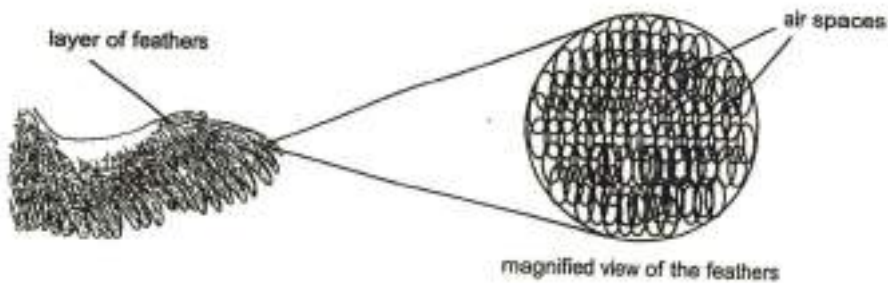
Primary 5 Science » Primary 5 Science (Term 2)

2 pts

John conducted an experiment using two identical flasks as shown below. Flask X was covered with a layer of feathers with netting while flask Y was only covered with netting. Both flasks were filled with 200 cm³ of water measuring 80°C.



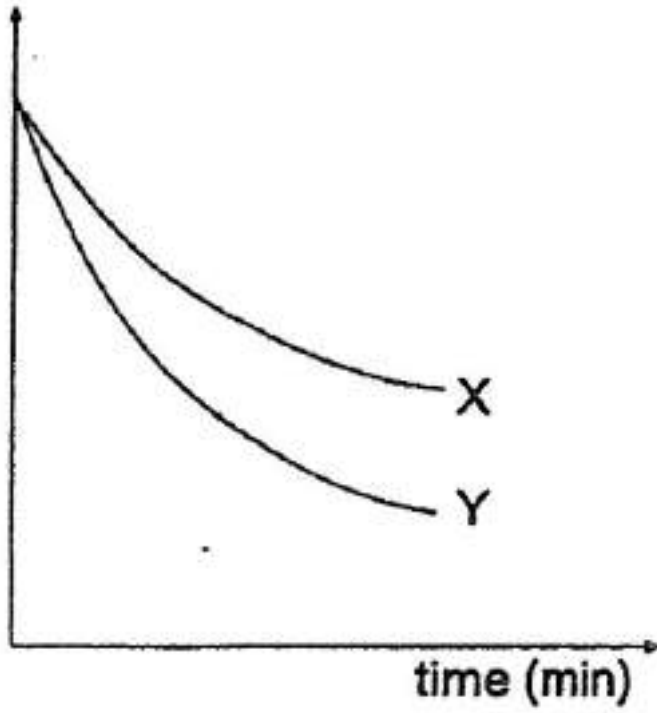
A magnified picture of the feathers is shown in the diagram below.



Which one of the following graphs correctly shows the temperature of water in flask X and Y over a period of time?

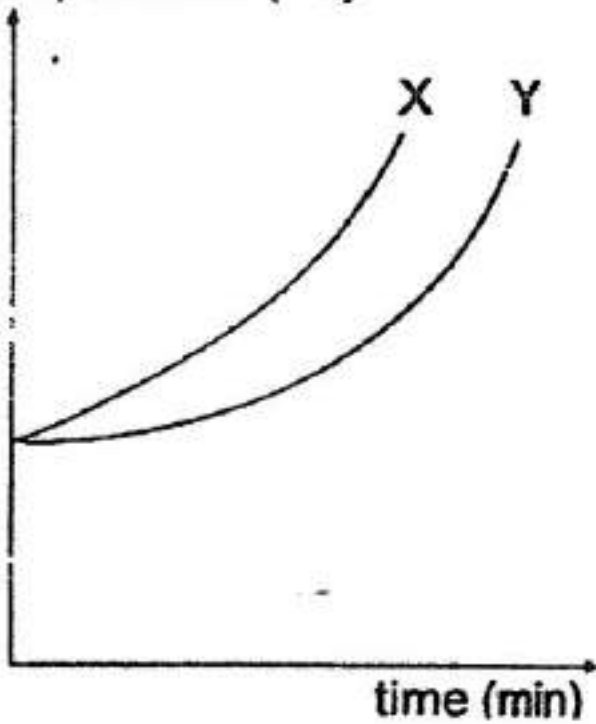
- ✓ A)

temperature ($^{\circ}\text{C}$)

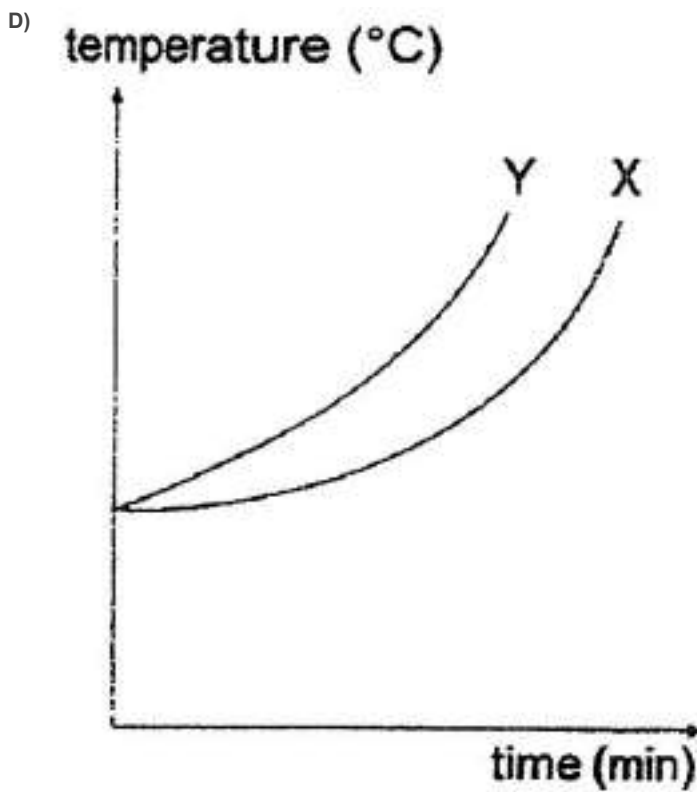
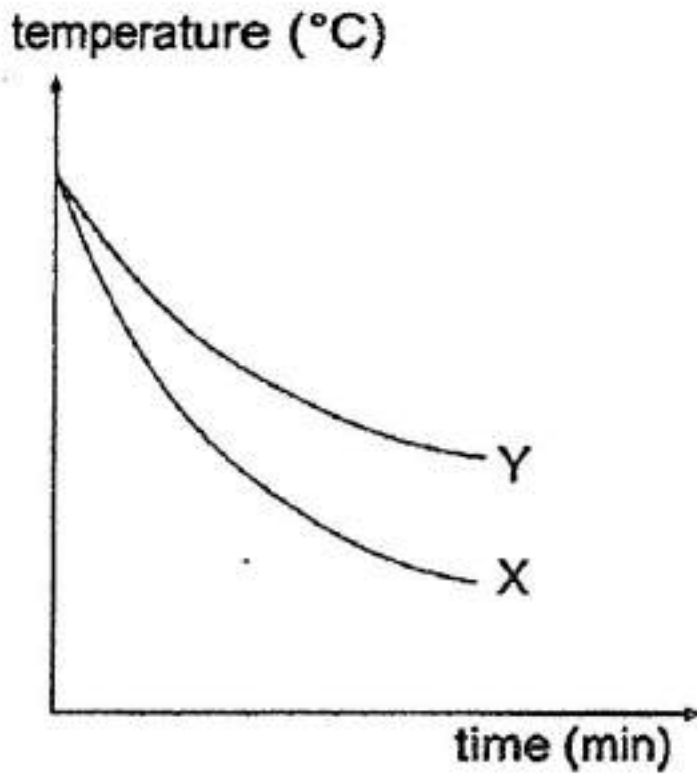


B)

temperature ($^{\circ}\text{C}$)



C)



Question Type: Multiple Choice
Randomize Answers: No
Date Added: Thu 5th Aug 2021
Last Modified: N/A
QID#: 28,627,525

Question 29

Primary 5 Science » Primary 5 Science (Term 2)

0 pts

Wendy helped her mother to bake potatoes for dinner. She placed a raw potato on a plate as shown in Figure 1.



Figure 1

Wendy's mother told her that the potato will be baked faster if she cut it as shown in Figure 2.



Figure 2

Name the variable Wendy should measure to find out if her mother's suggestion is correct. (1 mark)

This question is designed for extended answers that parent/ teacher will have to assign and guide child to attempt after the test has been completed.

Grading: This question type is not graded on this system and will not affect the final score as it was designed in such a way that it requires manual assistance.

Question Type: Essay
Date Added: Thu 5th Aug 2021
Last Modified: N/A
QID#: 28,627,528

Correctly answered feedback

The time taken for the potato to be cooked using each method.

Incorrectly answered feedback

The time taken for the potato to be cooked using each method.

[Answers](#) | [Edit](#) | [Duplicate](#) | [Used In](#) | [Reorder](#)

[Remove From Test](#)

Question 30

Primary 5 Science » Primary 5 Science (Term 2)

0 pts

Wendy helped her mother to bake potatoes for dinner. She placed a raw potato on a plate as shown in Figure 1.



Figure 1

Wendy's mother told her that the potato will be baked faster if she cut it as shown in Figure 2.



Figure 2

Give a reason why the potato in Figure 2 would be baked faster than that in Figure 1. (2 marks)

This question is designed for extended answers that parent/ teacher will have to assign and guide child to attempt after the test has been completed.

Grading: This question type is not graded on this system and will not affect the final score as it was designed in such a way that it requires manual assistance.

Question Type: Essay
Date Added: Thu 5th Aug 2021
Last Modified: N/A
QID#: 28,627,530

Correctly answered feedback

There is greater exposed surface area so it could gain more heat and bake faster.

Incorrectly answered feedback

There is greater exposed surface area so it could gain more heat and bake faster.

[Answers](#) | [Edit](#) | [Duplicate](#) | [Used In](#) | [Reorder](#)

[Remove From Test](#)

Question 31

Primary 5 Science » Primary 5 Science (Term 2)

0 pts

Darren wanted to transfer 50 ml of liquid from the beaker onto a petri dish using a plastic dropper.



Step 1: Hold the plastic dropper in a vertical position in a beaker of water



Step 2: Insert the dropper inside the water. Squeeze the rubber end of the dropper and bubbles will appear.



Step 3: Release the rubber end of the dropper and water will enter the dropper.

Explain why water will enter the dropper in step 3. (2 marks)

This question is designed for extended answers that parent/ teacher will have to assign and guide child to attempt after the test has been completed.

Grading: This question type is not graded on this system and will not affect the final score as it was designed in such a way that it requires manual assistance.

Question Type: Essay
Date Added: Thu 5th Aug 2021
Last Modified: N/A
QID#: 28,627,531

Correctly answered feedback

Air is pushed out of the dropper and water enters to occupy the space previously occupied by the air.

Incorrectly answered feedback

Air is pushed out of the dropper and water enters to occupy the space previously occupied by the air.

[Answers](#) | [Edit](#) | [Duplicate](#) | [Used In](#) | [Reorder](#)

[Remove From Test](#)

Question 32

Primary 5 Science » Primary 5 Science (Term 2)

0 pts

Darren wanted to transfer 50 ml of liquid from the beaker onto a petri dish using a plastic dropper.



Step 1: Hold the plastic dropper in a vertical position in a beaker of water



Step 2: Insert the dropper inside the water. Squeeze the rubber end of the dropper and bubbles will appear.



Step 3: Release the rubber end of the dropper and water will enter the dropper.

Liquids and gases have mass and occupy space.
State another common property of liquids and gases. (1 mark)

This question is designed for extended answers that parent/ teacher will have to assign and guide child to attempt after the test has been completed.

Grading: This question type is not graded on this system and will not affect the final score as it was designed in such a way that it requires manual assistance.

Question Type: Essay
Date Added: Thu 5th Aug 2021
Last Modified: N/A
QID#: 28,627,533

Correctly answered feedback

They have no definite shape/take the shape of their containers.

Incorrectly answered feedback

They have no definite shape/take the shape of their containers.

[Answers](#) | [Edit](#) | [Duplicate](#) | [Used In](#) | [Reorder](#)

[Remove From Test](#)

Question 33

Primary 5 Science » Primary 5 Science (Term 2)

0 pts

Darren wanted to fill up a pail using a bottle of water.



The pail was filled up with water faster using Method 2. Explain why.

[2]

This question is designed for extended answers that parent/ teacher will have to assign and guide child to attempt after the test has been completed.

Grading: This question type is not graded on this system and will not affect the final score as it was designed in such a way that it requires manual assistance.

Question Type: Essay
Date Added: Thu 5th Aug 2021
Last Modified: N/A
QID#: 28,627,535

Correctly answered feedback

Air was able to enter the bottle to push the water out.

Incorrectly answered feedback

Air was able to enter the bottle to push the water out.

[Answers](#) | [Edit](#) | [Duplicate](#) | [Used In](#) | [Reorder](#)

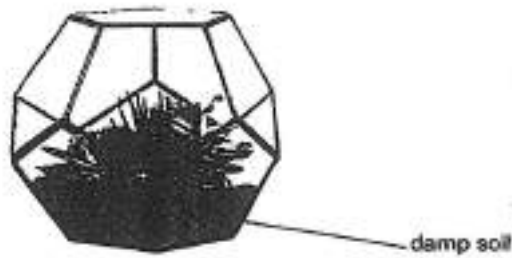
[Remove From Test](#)

Question 34

Primary 5 Science » Primary 5 Science (Term 2)

0 pts

Jermaine set up a terrarium as shown below. She did not water the plants after it was sealed.



After two weeks, Jermaine noticed that mist can be seen inside the terrarium.



Explain how the 'mist' in the terrarium was formed. (2 marks)

This question is designed for extended answers that parent/ teacher will have to assign and guide child to attempt after the test has been completed.

Grading: This question type is not graded on this system and will not affect the final score as it was designed in such a way that it requires manual assistance.

Question Type: Essay
Date Added: Thu 5th Aug 2021
Last Modified: N/A
QID#: 28,627,537

Correctly answered feedback

The water from the damp soil evaporated. The water vapour then touches the cooler surrounding, loses heat and condenses into mist.

Incorrectly answered feedback

The water from the damp soil evaporated. The water vapour then touches the cooler surrounding, loses heat and condenses into mist.

[Answers](#) | [Edit](#) | [Duplicate](#) | [Used In](#) | [Reorder](#)

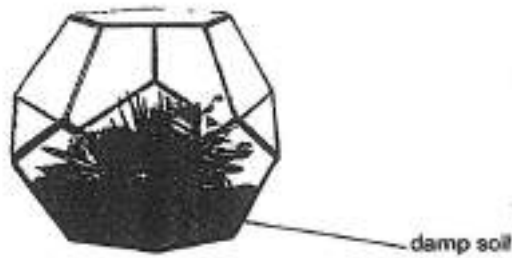
[Remove From Test](#)

Question 35

Primary 5 Science » Primary 5 Science (Term 2)

0 pts

Jermaine set up a terrarium as shown below. She did not water the plants after it was sealed.



After two weeks, Jermaine noticed that mist can be seen inside the terrarium.



Explain why the plants in the terrarium can survive without being watered for two weeks. (2 marks)

This question is designed for extended answers that parent/ teacher will have to assign and guide child to attempt after the test has been completed.

Grading: This question type is not graded on this system and will not affect the final score as it was designed in such a way that it requires manual assistance.

Question Type: Essay
Date Added: Thu 5th Aug 2021
Last Modified: N/A
QID#: 28,627,538

Correctly answered feedback

Water droplets will fall on the soil and evaporate again. Water cycle will repeat.

Incorrectly answered feedback

Water droplets will fall on the soil and evaporate again. Water cycle will repeat.

[Answers](#) | [Edit](#) | [Duplicate](#) | [Used In](#) | [Reorder](#)

[Remove From Test](#)

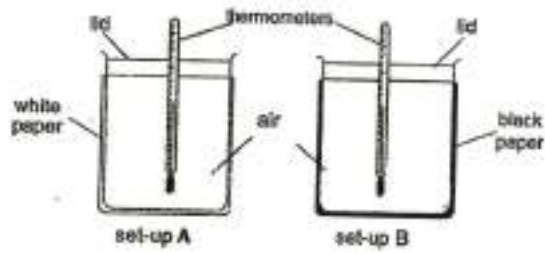
Question 36

Primary 5 Science » Primary 5 Science (Term 2)

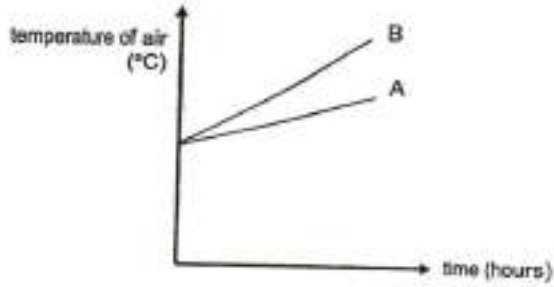
0 pts

Mel Li wanted to find out how the colour of the surface of the beakers affects the temperature of air in the beakers.

She prepared set-ups A and B as shown below. She placed the set-ups under the Sun over a period of time.



The graph below shows the change in the temperature of the air in both set-ups over a few hours.



Based on her graph, what conclusion can she draw from the experiment? Give a reason for your answer.

[2]

This question is designed for extended answers that parent/ teacher will have to assign and guide child to attempt after the test has been completed.

Grading: This question type is not graded on this system and will not affect the final score as it was designed in such a way that it requires manual assistance.

Question Type: Essay
 Date Added: Thu 5th Aug 2021
 Last Modified: N/A
 QID#: 28,627,539

Correctly answered feedback

Conclusion: Temperature of air is higher in the beaker wrapped with black paper.
 Reason: Black paper absorbs more heat.

Incorrectly answered feedback

Conclusion: Temperature of air is higher in the beaker wrapped with black paper.
 Reason: Black paper absorbs more heat.

[Answers](#) | [Edit](#) | [Duplicate](#) | [Used In](#) | [Reorder](#)

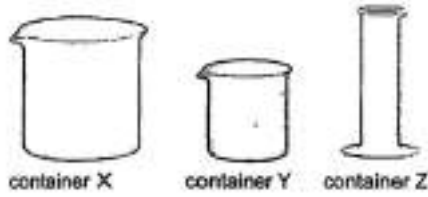
[Remove From Test](#)

Question 37

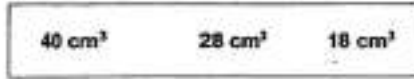
Primary 5 Science » Primary 5 Science (Term 2)

1 pt

Steven conducted an experiment to compare the rates of evaporation of water in containers X, Y and Z. He poured 50 cm³ of water into each of the three containers. He placed the set-ups under a fan for a day.



Use the figures provided in the box to complete the table below to show the volume of water left at the end of the experiment. [1]



Container	Volume of water left in the container (cm ³)	
	At the start of experiment	After a day
X	50	
Y	50	
Z	50	

Clue

Match

Container	At the start of experiment	After a day
X	50	

18 cm

Points: +0.3 -0

Container	At the start of experiment	After a day
Y	50	

28 cm

Points: +0.3 -0

Container	At the start of experiment	After a day
Z	50	

40 cm

Points: +0.4 -0

Question Type: Matching
Shuffle Mode: Shuffle Matches Only
Date Added: Thu 5th Aug 2021
Last Modified: N/A
QID#: 28,627,556

[Answers](#) |
 [Edit](#) |
 [Duplicate](#) |
 [Used In](#) |
 [Reorder](#)

[Remove From Test](#)

Question 38

Primary 5 Science » Primary 5 Science (Term 2)

0 pts

Steven conducted an experiment to compare the rates of evaporation of water in containers X, Y and Z. He poured 50 cm³ of water into each of the three containers. He placed the set-ups under a fan for a day.



Explain why the following actions would help make the experiment a fair test. (2 marks)

- i) Using same amount of water in each container.
- ii) Placing all three containers at the same place.

This question is designed for extended answers that parent/ teacher will have to assign and guide child to attempt after the test has been completed.

Grading: This question type is not graded on this system and will not affect the final score as it was designed in such a way that it requires manual assistance.

Question Type: Essay
Date Added: Thu 5th Aug 2021
Last Modified: N/A
QID#: 28,627,527

Correctly answered feedback

- i) It ensures that the amount of water evaporated is only due to the amount of exposed surface area.
- ii) It ensures that all beakers are exposed to the same temperature of surroundings. same amount of heat / same amount of wind.

Incorrectly answered feedback

- i) It ensures that the amount of water evaporated is only due to the amount of exposed surface area.
- ii) It ensures that all beakers are exposed to the same temperature of surroundings. same amount of heat / same amount of wind.

[Answers](#) | [Edit](#) | [Duplicate](#) | [Used In](#) | [Reorder](#)

[Remove From Test](#)

Question 39

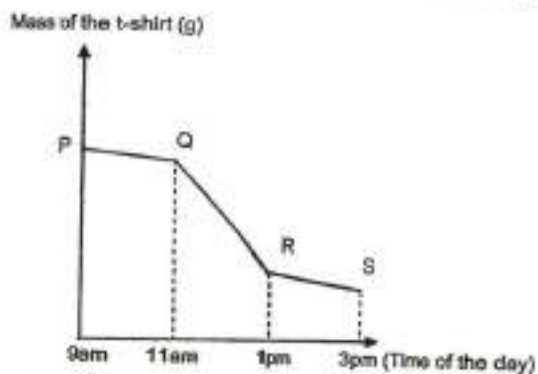
Primary 5 Science » Primary 5 Science (Term 2)

0 pts

The diagram below shows a wet t-shirt hung on a clothesline. Steven measured the mass of the shirt every hour.



The graph below shows the changes in the mass of the wet t-shirt over a period of time.



Which part of the graph above (PQ, QR or RS) shows the highest rate of evaporation of water during the day? Explain your answer. [2]

This question is designed for extended answers that parent/ teacher will have to assign and guide child to attempt after the test has been completed.

Grading: This question type is not graded on this system and will not affect the final score as it was designed in such a way that it requires manual assistance.

Question Type: Essay
 Date Added: Thu 5th Aug 2021
 Last Modified: N/A
 QID#: 28,627,529

Correctly answered feedback

Claim: QR

Evidence: The mass of the t-shirt decreases the most.

Reasoning: The temperature of surroundings is the highest during this period of time, thus the rate of evaporation of water is the highest.

Incorrectly answered feedback

Claim: QR

Evidence: The mass of the t-shirt decreases the most.

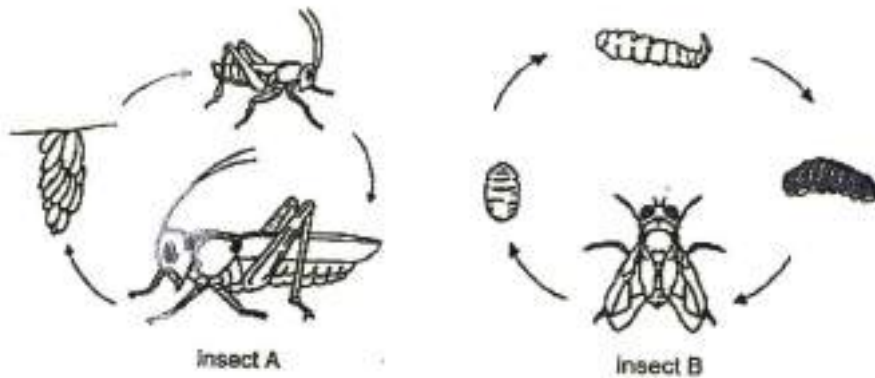
Reasoning: The temperature of surroundings is the highest during this period of time, thus the rate of evaporation of water is the highest.

Question 40

Primary 5 Science » Primary 5 Science (Term 2)

0 pts

The diagrams below shows the life cycles of insects A and B.



Compare the life cycles of insects A and B.

State 2 differences between the life cycles of insect A and B. (2 marks)
(Do not compare the size, shape and colour of the insects.)

This question is designed for extended answers that parent/ teacher will have to assign and guide child to attempt after the test has been completed.

Grading: This question type is not graded on this system and will not affect the final score as it was designed in such a way that it requires manual assistance.

Question Type: Essay
Date Added: Thu 5th Aug 2021
Last Modified: N/A
QID#: 28,627,541

Correctly answered feedback

- The young of insect A resembles its adult but not insect B.
- Insect A lays many eggs at a time while insect B lays one egg at a time.
- Insect A has a three-stage life cycle while insect B has a four-stage life cycle.

Incorrectly answered feedback

- The young of insect A resembles its adult but not insect B.
- Insect A lays many eggs at a time while insect B lays one egg at a time.
- Insect A has a three-stage life cycle while insect B has a four-stage life cycle.

[Answers](#) | [Edit](#) | [Duplicate](#) | [Used In](#) | [Reorder](#)

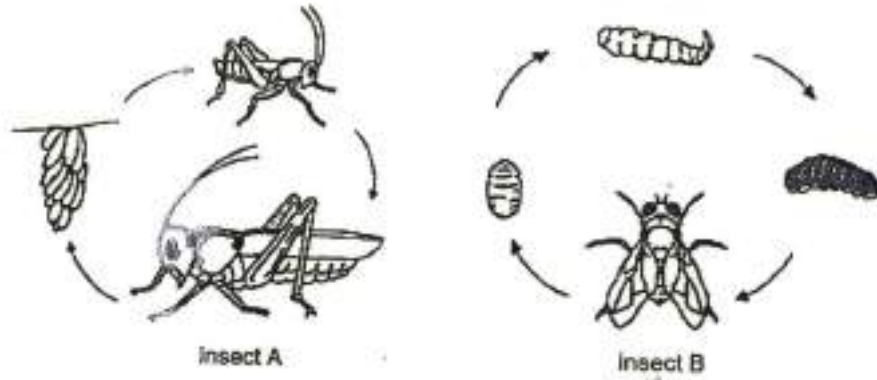
[Remove From Test](#)

Question 41

Primary 5 Science » Primary 5 Science (Term 2)

0 pts

The diagrams below shows the life cycles of insects A and B.



Compare the life cycles of insects A and B.

Butterflies lay many eggs on leaves at one time. State one advantage of laying many eggs. (1 mark)

This question is designed for extended answers that parent/ teacher will have to assign and guide child to attempt after the test has been completed.

Grading: This question type is not graded on this system and will not affect the final score as it was designed in such a way that it requires manual assistance.

Question Type: Essay
Date Added: Thu 5th Aug 2021
Last Modified: N/A
QID#: 28,627,542

Correctly answered feedback

The chances of more eggs developing into adults is higher.

Incorrectly answered feedback

The chances of more eggs developing into adults is higher.

[Answers](#) | [Edit](#) | [Duplicate](#) | [Used In](#) | [Reorder](#)

[Remove From Test](#)

Question 42

Primary 5 Science » Primary 5 Science (Term 2)

0 pts

The table below is made of wood from sustainable forests.



Sustainable forests:

A sustainable forest will contain trees of all ages and often different species of trees. As the trees mature they are cut down and the natural wood is processed at saw mills. The trees are replaced with seedlings. In this way the forest is constantly renewed.

Give 2 reasons why it is important to replace the forest trees that are cut down. (2 marks)

This question is designed for extended answers that parent/ teacher will have to assign and guide child to attempt after the test has been completed.

Grading: This question type is not graded on this system and will not affect the final score as it was designed in such a way that it requires manual assistance.

Question Type: Essay
 Date Added: Thu 5th Aug 2021
 Last Modified: N/A
 QID#: 28,627,543

Correctly answered feedback

Possible Answers: (Choose any 2 reasons)

- There will be trees to replenish the atmosphere with oxygen.
- There will be roots of trees to bind soil together to prevent soil erosion.
- There will be trees to provide food/shelter for animals.
- The trees will help take in carbon dioxide to prevent global warming.
- The trees help to keep the surrounding cooler.

Incorrectly answered feedback

Possible Answers: (Choose any 2 reasons)

- There will be trees to replenish the atmosphere with oxygen.
- There will be roots of trees to bind soil together to prevent soil erosion.
- There will be trees to provide food/shelter for animals.
- The trees will help take in carbon dioxide to prevent global warming.
- The trees help to keep the surrounding cooler.

[Answers](#) |
 [Edit](#) |
 [Duplicate](#) |
 [Used In](#) |
 [Reorder](#)

[Remove From Test](#)

Question 43

Primary 5 Science » Primary 5 Science (Term 2)

1 pt

The table below is made of wood from sustainable forests.



Sustainable forests:

A sustainable forest will contain trees of all ages and often different species of trees. As the trees mature they are cut down and the natural wood is processed at saw mills. The trees are replaced with seedlings. In this way the forest is constantly renewed.

Name a greenhouse gas.

Accepted answers:

- ✓ Carbon dioxide
- ✓ Methane
- ✓ Water vapour

Question Type: Free Text
Date Added: Thu 5th Aug 2021
Last Modified: N/A
QID#: 28,627,554

Correctly answered feedback

carbon dioxide / methane / water vapour

Incorrectly answered feedback

carbon dioxide / methane / water vapour

[Answers](#) | [Edit](#) | [Duplicate](#) | [Used In](#) | [Reorder](#)

[Remove From Test](#)

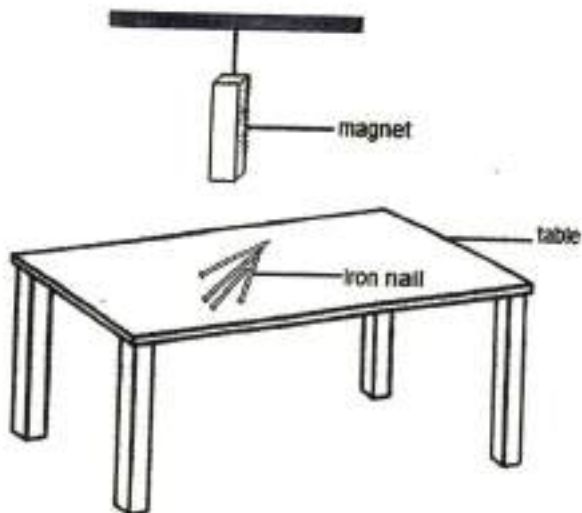
Question 44

Primary 5 Science » Primary 5 Science (Term 2)

2 pts

An experiment was conducted to find out the strength of four different magnets.

Iron nails were placed on a table. Magnet A was hung at a height of 30 cm above the table top as shown in the diagram below. The experiment is repeated with magnets B, C and D.



The number of iron nails attracted to the magnet was recorded in the table below.

Magnet	A	B	C	D
Number of iron nails	20	7	13	15

Based on the results above, which magnet was the strongest? Give a reason for your answer?

Accepted answers:

- ✓ Magnet A
- ✓ A

Question Type: Free Text
 Date Added: Thu 5th Aug 2021
 Last Modified: N/A
 QID#: 28,627,553

Correctly answered feedback

Magnet A. It attracted the most number of iron nails.

Incorrectly answered feedback

Magnet A. It attracted the most number of iron nails.

[Answers](#) | [Edit](#) | [Duplicate](#) | [Used In](#) | [Reorder](#)

[Remove From Test](#)

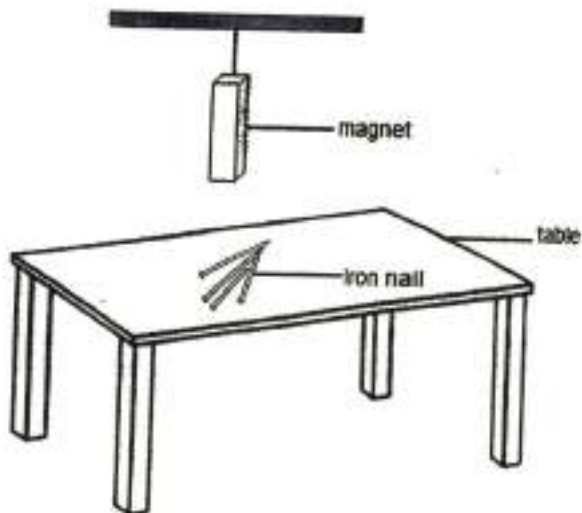
Question 45

Primary 5 Science » Primary 5 Science (Term 2)

0 pts

An experiment was conducted to find out the strength of four different magnets.

Iron nails were placed on a table. Magnet A was hung at a height of 30 cm above the table top as shown in the diagram below. The experiment is repeated with magnets B, C and D.



The number of iron nails attracted to the magnet was recorded in the table below.

Magnet	A	B	C	D
Number of iron nails	20	7	13	15

Devi wanted to determine the strength of the magnets by using only one iron nail and a ruler. Describe how she can do so. (2 marks)

This question is designed for extended answers that parent/ teacher will have to assign and guide child to attempt after the test has been completed.

Grading: This question type is not graded on this system and will not affect the final score as it was designed in such a way that it requires manual assistance.

Question Type: Essay
 Date Added: Thu 5th Aug 2021
 Last Modified: N/A
 QID#: 28,627,545

Correctly answered feedback

- Place each magnet at an equal distance from an iron nail and move the magnet towards the iron nail until it attracts the nail
- Measure the distance from which each magnet can attract the iron nail.

Incorrectly answered feedback

- Place each magnet at an equal distance from an iron nail and move the magnet towards the iron nail until it attracts the nail
- Measure the distance from which each magnet can attract the iron nail.

[Answers](#) | [Edit](#) | [Duplicate](#) | [Used In](#) | [Reorder](#)

[Remove From Test](#)

Question 46

Primary 5 Science » Primary 5 Science (Term 2)

1 pt

The table below shows some physical traits of Mr. and Mrs. Lim.

Physical trait	Mr. Lim	Mrs. Lim
Hair length	Short	Short
Eyelid	Single	Single
Eye colour	Black	Black

The table below shows some of the physical traits of three girls, Abby, Betty and Claire.

Physical trait	Abby	Betty	Claire
Hair length	Short	Long	Short
Eyelid	Single	Single	Double
Eye colour	Black	Black	Blue

Only two of the girls are the daughters of Mr. and Mrs. Lim.

Based on the information given, state which girl is not likely to be the daughter of Mr. and Mrs. Lim. Explain your answer. (1 mark)

Accepted answers:

- ✓ Claire
- ✓ clarie

Question Type: Free Text
 Date Added: Thu 5th Aug 2021
 Last Modified: N/A
 QID#: 28,627,546

Correctly answered feedback

Claire. She has blue eyes and double eyelids while both Mr. and Mrs Lim do not.

Incorrectly answered feedback

Claire. She has blue eyes and double eyelids while both Mr. and Mrs Lim do not.

[Answers](#) | [Edit](#) | [Duplicate](#) | [Used In](#) | [Reorder](#)

[Remove From Test](#)

Question 47

Primary 5 Science » Primary 5 Science (Term 2)

0 pts

The table below shows some physical traits of Mr. and Mrs. Lim.

Physical trait	Mr. Lim	Mrs. Lim
Hair length	Short	Short
Eyelid	Single	Single
Eye colour	Black	Black

The table below shows some of the physical traits of three girls, Abby, Betty and Claire.

Physical trait	Abby	Betty	Claire
Hair length	Short	Long	Short
Eyelid	Single	Single	Double
Eye colour	Black	Black	Blue

Only two of the girls are the daughters of Mr. and Mrs. Lim.

Explain how physical traits are passed on from parents to their children. (1 mark)

This question is designed for extended answers that parent/ teacher will have to assign and guide child to attempt after the test has been completed.

Grading: This question type is not graded on this system and will not affect the final score as it was designed in such a way that it requires manual assistance.

Question Type: Essay
Date Added: Thu 5th Aug 2021
Last Modified: N/A
QID#: 28,627,534

Correctly answered feedback

During fertilization, the sperm and egg fuse and traits are passed on from parents to young.

Incorrectly answered feedback

During fertilization, the sperm and egg fuse and traits are passed on from parents to young.

[Answers](#) | [Edit](#) | [Duplicate](#) | [Used In](#) | [Reorder](#)

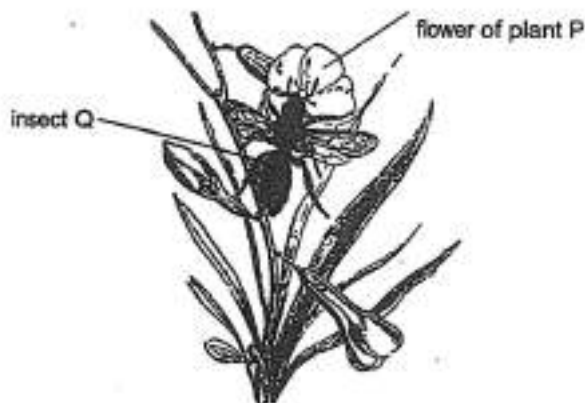
[Remove From Test](#)

Question 48

Primary 5 Science » Primary 5 Science (Term 2)

1 pt

Process K takes place when insect Q lands on the flower of plant P as shown in the diagram below.



Name process K.

Accepted answers:

✓ Pollination

Question Type: Free Text
Date Added: Thu 5th Aug 2021
Last Modified: N/A
QID#: 28,627,555

[Answers](#) | [Edit](#) | [Duplicate](#) | [Used In](#) | [Reorder](#)

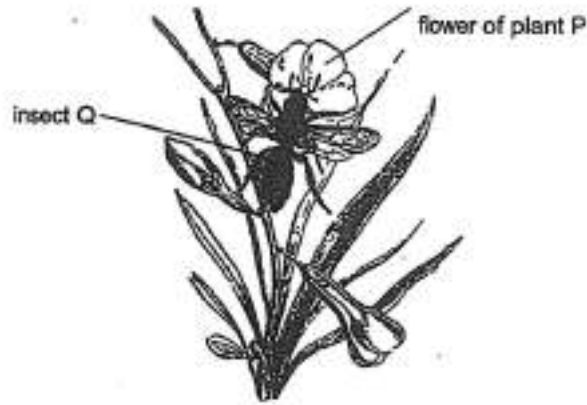
[Remove From Test](#)

Question 49

Primary 5 Science » Primary 5 Science (Term 2)

0 pts

Process K takes place when insect Q lands on the flower of plant P as shown in the diagram below.



How does removing the petals of plant P affect process K? (1 mark)

This question is designed for extended answers that parent/ teacher will have to assign and guide child to attempt after the test has been completed.

Grading: This question type is not graded on this system and will not affect the final score as it was designed in such a way that it requires manual assistance.

Question Type: Essay
Date Added: Thu 5th Aug 2021
Last Modified: N/A
QID#: 28,627,532

Correctly answered feedback

Insects will not be attracted to the flower of plant P and the chances of pollination will decrease.

Incorrectly answered feedback

Insects will not be attracted to the flower of plant P and the chances of pollination will decrease.

[Answers](#) | [Edit](#) | [Duplicate](#) | [Used In](#) | [Reorder](#)

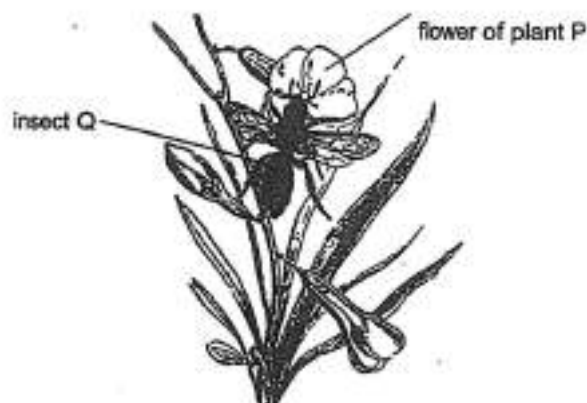
[Remove From Test](#)

Question 50

Primary 5 Science » Primary 5 Science (Term 2)

1 pt

Process K takes place when insect Q lands on the flower of plant P as shown in the diagram below.



Name the female reproductive part that needs to be present in order for process K to take place.

Accepted answers:

✓ Stigma

Question Type: Free Text
Date Added: Thu 5th Aug 2021
Last Modified: N/A
QID#: 28,627,547

[Answers](#) |
 [Edit](#) |
 [Duplicate](#) |
 [Used In](#) |
 [Reorder](#)

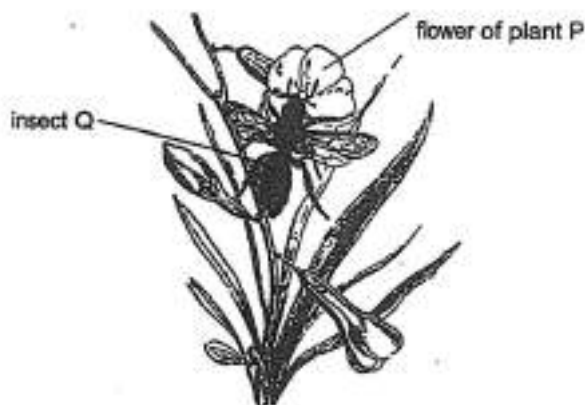
[Remove From Test](#)

Question 51

Primary 5 Science » Primary 5 Science (Term 2)

0 pts

Process K takes place when insect Q lands on the flower of plant P as shown in the diagram below.



What is likely to happen to the number of fruits produced by plant P if the number of insect Q decreases quickly? Explain your answer. (2 marks)

This question is designed for extended answers that parent/ teacher will have to assign and guide child to attempt after the test has been completed.

Grading: This question type is not graded on this system and will not affect the final score as it was designed in such a way that it requires manual assistance.

Question Type: Essay
Date Added: Thu 5th Aug 2021
Last Modified: N/A
QID#: 28,627,536

Correctly answered feedback

The number of fruits will decrease.

Chances of pollinating the flowers will be lesser so fewer flowers will be fertilised and develop into fruits.

Incorrectly answered feedback

The number of fruits will decrease.

Chances of pollinating the flowers will be lesser so fewer flowers will be fertilised and develop into fruits.

[Answers](#) |
 [Edit](#) |
 [Duplicate](#) |
 [Used In](#) |
 [Reorder](#)

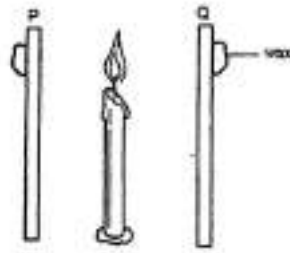
[Remove From Test](#)

Question 52

Primary 5 Science » Primary 5 Science (Term 2)

1 pt

Kenny placed a candle at equal distance in between two sheets of materials P and Q. An equal amount of wax was attached to the materials.



Kenny recorded the amount of time taken for the wax on materials P and Q to melt as shown in the table below.

Material	Time taken for wax to melt (min)
P	20
Q	2

State the independent variable (changed variable) in this experiment.

Accepted answers:

✓ Type of material

Question Type: Free Text
Date Added: Thu 5th Aug 2021
Last Modified: N/A
QID#: 28,627,548

[Answers](#) | [Edit](#) | [Duplicate](#) | [Used In](#) | [Reorder](#)

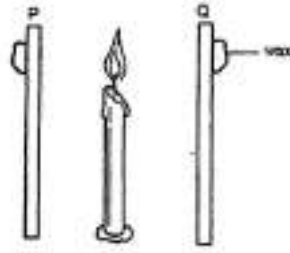
[Remove From Test](#)

Question 53

Primary 5 Science » Primary 5 Science (Term 2)

0.5 pts

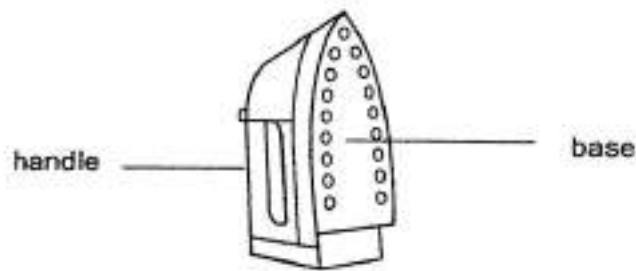
Kenny placed a candle at equal distance in between two sheets of materials P and Q. An equal amount of wax was attached to the materials.



Kenny recorded the amount of time taken for the wax on materials P and Q to melt as shown in the table below.

Material	Time taken for wax to melt (min)
P	20
Q	2

The diagram below shows an electric iron.



Which material (P or Q) should he use to make the base of the electric iron?

Base: _____

Accepted answers:

- ✓ Q
- ✓ Material Q
- ✓ Base: Q
- ✓ Base: Material Q

Question Type: Free Text
Date Added: Thu 5th Aug 2021
Last Modified: N/A
QID#: 28,627,549

[Answers](#) | [Edit](#) | [Duplicate](#) | [Used In](#) | [Reorder](#)

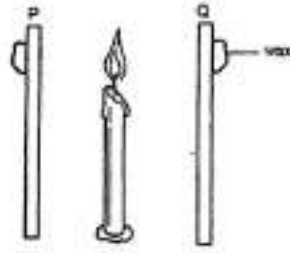
[Remove From Test](#)

Question 54

Primary 5 Science » Primary 5 Science (Term 2)

0.5 pts

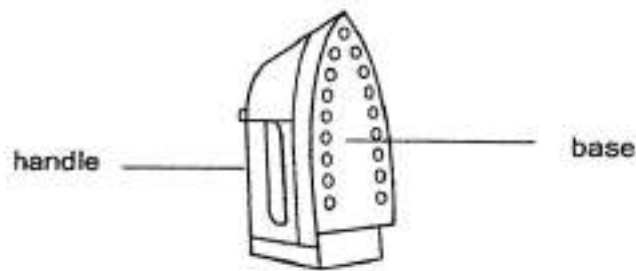
Kenny placed a candle at equal distance in between two sheets of materials P and Q. An equal amount of wax was attached to the materials.



Kenny recorded the amount of time taken for the wax on materials P and Q to melt as shown in the table below.

Material	Time taken for wax to melt (min)
P	20
Q	2

The diagram below shows an electric iron.



Which material (P or Q) should he use to make the handle of the electric iron?

Accepted answers:

- ✓ P
- ✓ Material P
- ✓ Handle: P
- ✓ Handle: Material P

Question Type: Free Text
 Date Added: Thu 5th Aug 2021
 Last Modified: N/A
 QID#: 28,627,550

[Answers](#) | [Edit](#) | [Duplicate](#) | [Used In](#) | [Reorder](#)

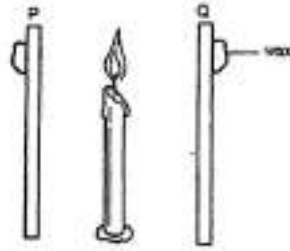
[Remove From Test](#)

Question 55

Primary 5 Science » Primary 5 Science (Term 2)

0 pts

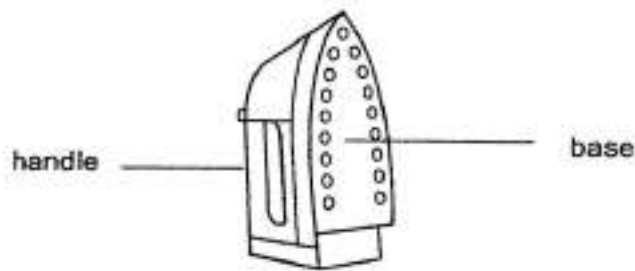
Kenny placed a candle at equal distance in between two sheets of materials P and Q. An equal amount of wax was attached to the materials.



Kenny recorded the amount of time taken for the wax on materials P and Q to melt as shown in the table below.

Material	Time taken for wax to melt (min)
P	20
Q	2

The diagram below shows an electric iron.



Using the results given, explain why you chose the material in the previous question to make the handle of the electric iron. (2 marks)

This question is designed for extended answers that parent/ teacher will have to assign and guide child to attempt after the test has been completed.

Grading: This question type is not graded on this system and will not affect the final score as it was designed in such a way that it requires manual assistance.

Question Type: Essay
 Date Added: Thu 5th Aug 2021
 Last Modified: N/A
 QID#: 28,627,540

Correctly answered feedback

Evidence (shown in table)
 Wax on material P took longer to melt

Reason

- P is a poorer conductor of heat
- so the handle will not hurt the user's hand

Incorrectly answered feedback

Evidence (shown in table)**Wax on material P took longer to melt****Reason**

- P is a poorer conductor of heat
- so the handle will not hurt the user's hand

[Answers](#) |
 [Edit](#) |
 [Duplicate](#) |
 [Used In](#) |
 [Reorder](#)

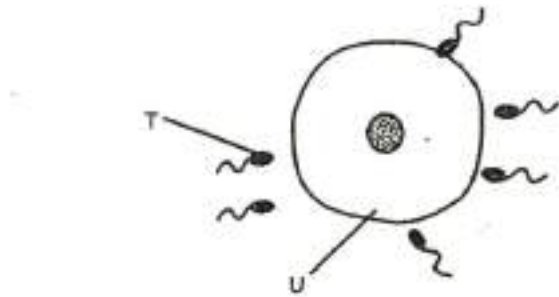
[Remove From Test](#)

Question 56

Primary 5 Science » Primary 5 Science (Term 2)

1 pt

The diagram below shows the male and female reproductive cells during process Z in the reproduction of a human. Cells T and U are needed for process Z to occur.



Name the reproductive part where cell T is produced: _____

Accepted answers:

- ✓ Testicle
- ✓ Testes
- ✓ Testis

Question Type: Free Text
Date Added: Thu 5th Aug 2021
Last Modified: N/A
QID#: 28,627,551

Correctly answered feedback

Testicle/Testes/Testis

Incorrectly answered feedback

Testicle/Testes/Testis

[Answers](#) |
 [Edit](#) |
 [Duplicate](#) |
 [Used In](#) |
 [Reorder](#)

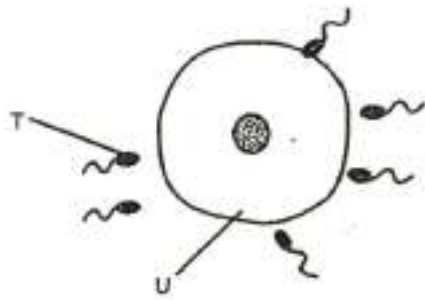
[Remove From Test](#)

Question 57

Primary 5 Science » Primary 5 Science (Term 2)

1 pt

The diagram below shows the male and female reproductive cells during process Z in the reproduction of a human. Cells T and U are needed for process Z to occur.



Name the reproductive part where cell U is produced: _____

Accepted answers:

- ✓ Ovary
- ✓ Ovaries

Question Type: Free Text
Date Added: Thu 5th Aug 2021
Last Modified: N/A
QID#: 28,627,552

Correctly answered feedback

Ovary/Ovaries

Incorrectly answered feedback

Ovary/Ovaries

[Answers](#) |
 [Edit](#) |
 [Duplicate](#) |
 [Used In](#) |
 [Reorder](#)

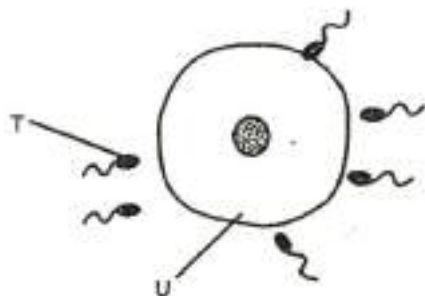
[Remove From Test](#)

Question 58

Primary 5 Science » Primary 5 Science (Term 2)

0 pts

The diagram below shows the male and female reproductive cells during process Z in the reproduction of a human. Cells T and U are needed for process Z to occur.



Process Z also takes place in flowering plants.

Describe how process Z takes place in a flower. (2 marks)

This question is designed for extended answers that parent/ teacher will have to assign and guide child to attempt after the test has been completed.

Grading: This question type is not graded on this system and will not affect the final score as it was designed in such a way that it requires manual assistance.

Question Type: Essay
Date Added: Thu 5th Aug 2021
Last Modified: N/A
QID#: 28,627,544

Correctly answered feedback

The male reproductive cell in the pollen tube fuses with the egg cell in the ovule.

Incorrectly answered feedback

The male reproductive cell in the pollen tube fuses with the egg cell in the ovule.

[Answers](#) | [Edit](#) | [Duplicate](#) | [Used In](#) | [Reorder](#)

[Remove From Test](#)